

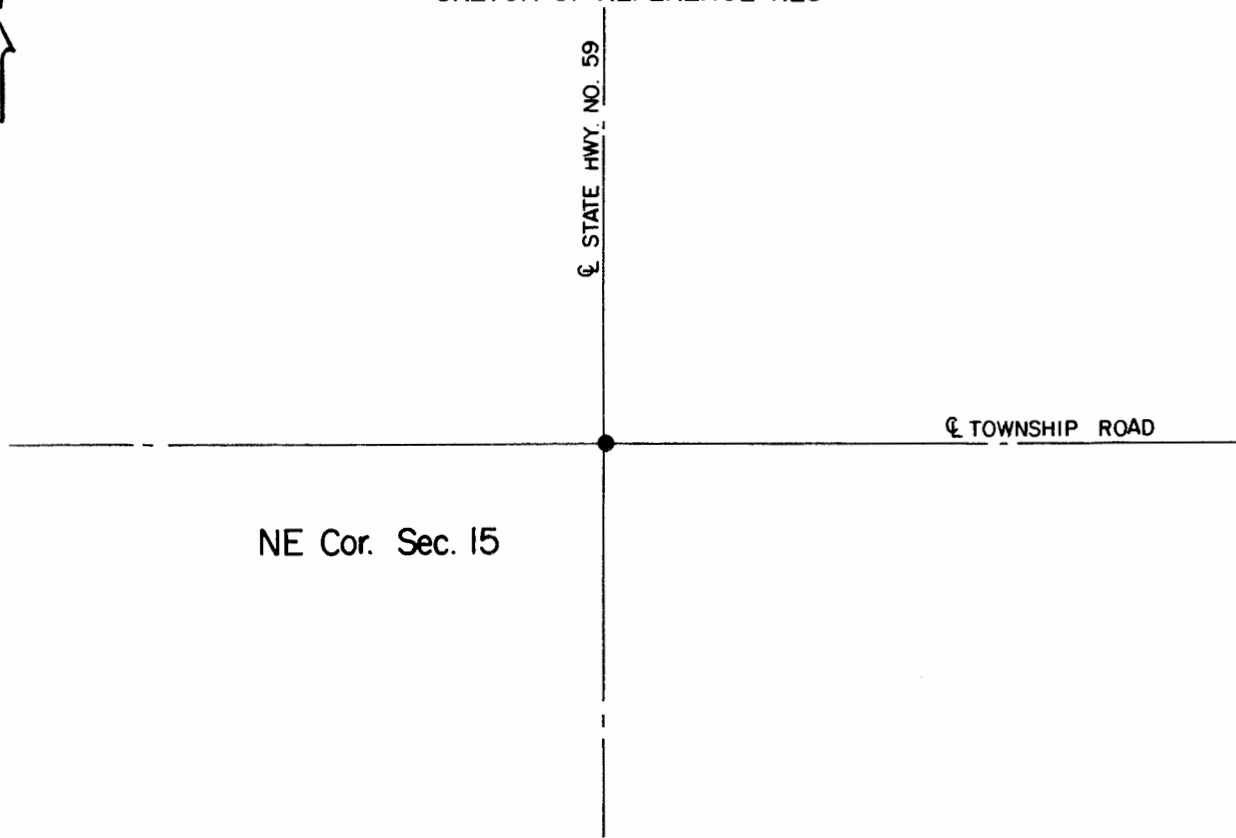
CERTIFICATE OF LOCATION OF GOVERNMENT CORNER

Northeast Corner of Section **15** , Township **108** , Range **41** 5th P.M.
STATE OF MINNESOTA, County of Murray.

Statement: June 15, 1989 - Found a brass rod in the 1932 concrete road surface.




SKETCH OF REFERENCE TIES



Statement of evidence relative to this corner location is on the back of page.

I hereby certify that this document and the data contained herein was prepared by me or under my direct supervision and that I am a duly Registered Land Surveyor under the laws of the State of Minnesota.


Duane A. Bonnema

Nov 6, 1989
Date

Minnesota Registration No. 14895

OFFICE OF THE COUNTY RECORDER
COUNTY OF MURRAY **NOV 15 1989**

I hereby certify that this document was filed in the County Recorder's office at ____ M. on the ____ day of _____ A.D., 19____

County Recorder James U. Johnson

By _____, Deputy

DOCUMENT NO. _____